



S Legend Clothing Company

BAZ[®]
ASSOCIATES

Manufacturer of Institutional Formal Wear
Personality Development through Power Dressing



S Legend Clothing Company

BAZ[®]
ASSOCIATES

We are major a major Manufacturer of Formal Suits for Institutions and Corporate since 1980. While suits are the primary production, SLCC also manufactures and supplies various customer specific apparels.

We are one of the well-known manufacturers, suppliers and wholesalers of School, College, Corporate Companies, Medical and Hospital, Doctors, Nurses, Surgical Staff, Hotels, House Keeping, Industrial and Security Uniforms. Based at Chennai and fully committed to clear concepts of quality supplies and time deliveries, SLCC possess a high end team of richly experienced Professionals and skilled technicians. SLCC assures best of supplies with excellence and high worthiness

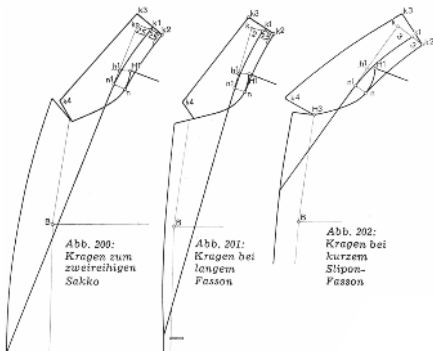
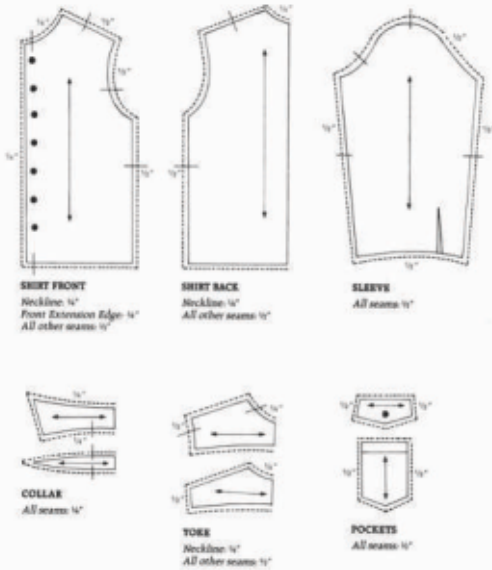




SLCC suits are personalized and tailor made. It's all about choices made by the buyer, and the measuring and fitting. What distinguishes a SLCC suit is that it is created specifically for the wearer, who chooses the fabrics, the features and details, and normally has several fittings so that the end product is a customized suit made by hand specifically for him. Tailor-made SLCC suits are a luxury in a ready-to-wear world, and their excellent quality sets them apart.

In a normal suit purchase, the buyer chooses from the closest standard size and may then have it tailored for a better fit. SLCC suit requires an individually cut pattern. This assures a perfect fit since the measurements are painstaking and detailed. This pattern is retained so that it's available for future suit purchases. An excellent tailor will always recheck the measurements for each individual SLCC suit, since bodies change with age and the purchaser may wish to have additional suits made in a different style: narrower lapels, a switch from single to double breasted, alterations in the venting.

With changes made in technology, machine-making now plays some part in many SLCC suits, although the benchmark of a SLCC suit is the



amount of hand sewing involved in its creation.

When purchasing a SLCC suit, one of the first choices is the fabric. Different fabric weights, patterns and textures will influence the cut and the drape of the suit. The buyer chooses from bolts of fabrics and is well-advised to select something classic in order to get the most wear out of the custom-made garment. A traditional chalk pin-stripe is popular, as is the subtle tweed and the four-season light worsted wool. The style of suit you order will dictate fabric choice to some degree, since the fabric weight and drape is an intricate component in excellent fit. The cutter and tailor for the suit can offer advice on fabric selection based on design elements you require.

When the fabric is selected and your measurements have been taken, SLCC tailors arrange for a hand-drawn pattern to be made. This allows the suit to be cut to adjust to each client's unique form. Patterns are often crafted from canvas. The fabric is then meticulously cut and ready to be stitched. When your suit is completed, there will be a final fitting so any necessary adjustments can be made. A SLCC suit is certainly more expensive than something you would find at the mall men's store, but it is more unique and likely to last a lifetime. A SLCC suit gives a man a refined look that's classic rather than trendy, and is an investment that pays off in longevity. SLCC suits add more than great style to a wardrobe. Men can feel confident knowing that their custom-made look is both flattering, uniquely their own style, and fabulously comfortable.



For more than three decades, the Unit has earned a wide status with an unprecedented performance as a reputed manufacturer and supplier of Institutional Formal Wear in the form of Suit Sets to the Student Community. Specific patterns and styles incorporating the best of base fabric with finest stitching formats, speciality Coat Covers/Hangers, free & time deliveries are the integral part of SLCC's exceptional growth and position.



S Legend Clothing Company

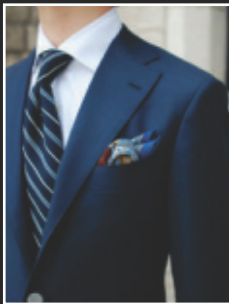
SLCC always looked up to have long term tie-ups with customers and have been maintaining customer satisfaction as a core objective with clear commitments and value added services. SLCC works out customer specific and highly economical price packages bearing in mind, Education as a cause and thus supporting the student community in a best possible way.

SLCC has its own integrated, specialized and sophisticated stitching unit at Chennai with updated machinery and skills to manufacture apparels with ease and style.



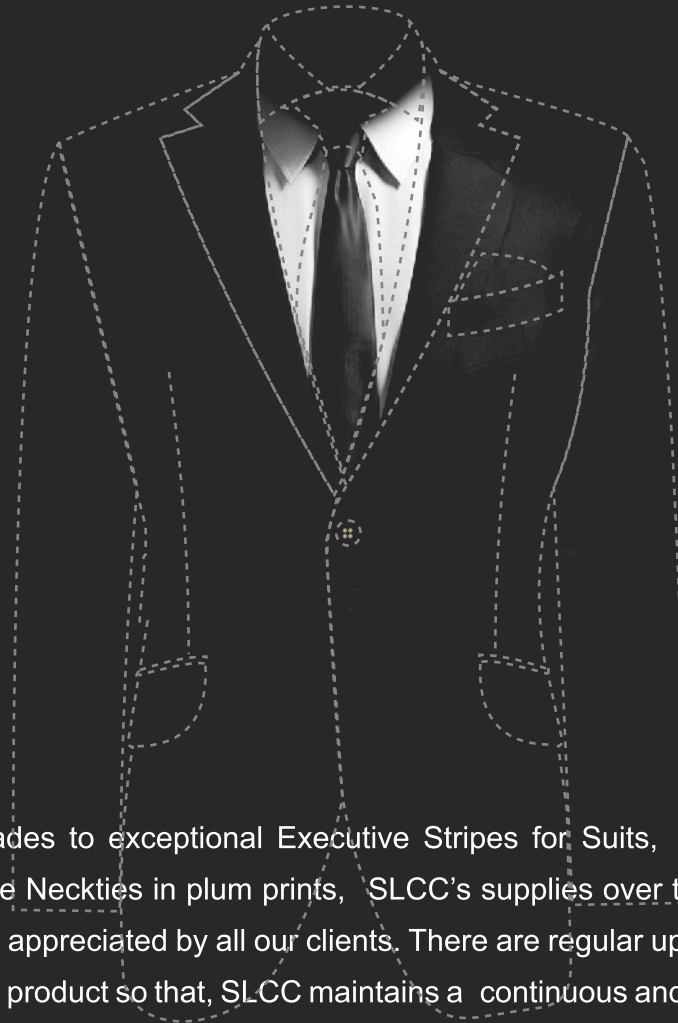
S Legend Clothing Company

BAZ[®]
ASSOCIATES



In principle, SLCC has been manufacturing & supplying Suit Sets, Blazers, Formal Trousers / Shirts, corresponding Neckties/Bows etc. to majority of Institutions / Student Community throughout Tamilnadu, a part of Andhra and Kerala. Apart from these, SLCC have also been providing specific apparels to Hotel Management Institutions and other Corporates over the years with full of Care and Customer Satisfaction.

Presenting Oneself with Elegancy, Confidence and Conviction



From Bright Plain Shades to exceptional Executive Stripes for Suits, select Shirt matches with corresponding silk-base Neckties in plum prints, SLCC's supplies over the years have been highly impressive and widely appreciated by all our clients. There are regular updates in designs, patterns and finishing of the end product so that, SLCC maintains a continuous and research oriented process in Manufacturing Line.

A black and white photograph of a man from the chest up, wearing a well-tailored grey three-piece suit. He is wearing a white dress shirt and a black necktie. The suit jacket is single-breasted with a notched lapel, and the vest is double-breasted with five buttons. A white pocket square is visible in the jacket's breast pocket. The background is dark and out of focus.

THE PRODUCT AND THE BRIEFING

The set is offered as a package comprising of one number each of Blazer, Formal Trouser, Corresponding Formal Shirt and a Silk Base Tie. The set is very economically priced for the benefit of student sector with all the base fabric from high brands and with highest stitching quality.

These are necessarily worn on many occasions like Inter-College functions, Seminars, Symposiums, Sports Meet, Placement and a number of other Interactive avenues. Beyond these, the set can be worn on a particular day of a week, for a period or so in the class room, enabling the student/user to get fully accustomed to the system of wearing formal wear with futuristic updates.

HAND-FINISHED COLLAR

Boasting a clean drape, it's sewn onto the jacket by hand (a sign of expert craftsmanship)

LAPEL

2 ¾" wide and pad-stitched to create a natural roll that stays tightly pressed against the chest, which we expanded by 1". (The more rows of lapel stitching, the better the quality. Ours features more than 20.)

THE CROSBY JACKET

We added some extra room at key points, like the arms, chest and shoulders, but kept the details that set apart our jackets, all of which are meticulously crafted by skilled artisans (each jacket takes over 200 steps from start to finish)



SHOULDER CONSTRUCTION

A custom sleeve head built from multiple layers of canvassing and felt, die-cut to precision-it creates a refined shapes and allows the sleeves to fall cleanly from the shoulder with an extra ¾" of room.

SLEEVE SETTING

The ½" wider sleeves are attached to the jacket by expert tailors using computer-operated machines, a difficult task that requires over six months of training.



Legend Clothing Company

BAZ[®]
ASSOCIATES

BLAZERS

From Finest quality Poly-Wool base or Poly-Viscose base with Imported inner materials like Linings, Fusing, Padding with Soft lined collar to present one, grand and diplomatic while worn.



TROUSERS

Same quality of Poly-Wool base or Poly-Viscose base as matching to Blazer with high quality inner materials like Fusing, Grippers, Pocketing Fabric and overall stitching format with a comfortable fit.



SHIRTS

Shirts of Poly-Cot or Poly-Viscose from finest branded fabrics with exclusive shades and specific stitching for a complete matching to the suit with gentle and rich in look.





Who doesn't want that !

A good suit makes a man appear sleek and elegant with elated confidence levels.

A perfectly crafted suit is the one item in a man's wardrobe that reflects a man's style and smartness. One should have a suit that is both classically stylish and fits him completely.

A significant part of what makes a suit look good on a man is the construction and appearance of the suit. Also the best of fabric apropos to all the geographical conditions and physical perspectives makes one more comfortable while wearing.

SLCC is all set to supply you the best of suit formats incorporating the finest fabric with other inputs of high quality and sustainability.

Reliance and Assurance

SLCC makes suits in Single breasted version and also according to specific needs in other patterns too. In principle, the basic fabric is comprising of Polyester + Viscose or Polyester + Merino Wool forms with a proper blend, count and weaving patterns to beget the user a high comfort and luxury.

There are other inputs like, Imported Fusing, Quality Lining, Soft Padding, Pocketing and suitable Lapel which SLCC incorporate to make the suit much more presentable, durable and long lasting. There is a specific soft fusing incorporated on the back of the collar that makes it more flexible and friendly to the neck while wearing.

Crafted with highly skilled personnel with stringent procedures and stitching formats, SLCC reassures a long life of its suits even on a continuous usage.



Out of our 100 Plus **ESTEEMED CUSTOMERS**

- Veltech Group of Institutions, Chennai
- Velammal Group of Institutions, Chennai/Madurai
- SRM Group of Institutions, Chennai
- Institute for Financial Management, (IFMR) Chennai
- GKM Group of Institutions, Chennai
- DMI Group of Institutions, Chennai
- Saveetha Group of Institutions, Chennai
- Dhanalakshmi Srinivasan Group of Institutions, Perambalur
- CARE Institutions, Trichy
- Bharatidasan Institute of Management, Trichy
- SASTRA University, Thanjavur
- Bharath Group of Institutions, Thanjavur
- JJ/Karpagavinayaga Group of Institutions, Pudukkottai/Chennai
- Jamal Mohamed College, Trichy
- Bishop Heber College, Trichy
- Thiagarajar Group of Institutions/Management, Madurai
- Saurashtra College, Madurai
- PSR Engineering College, Sivakasi
- Kalasalingam University, Srivilliputhur
- PSG Group of Institutions, Coimbatore
- GRD Institutions, Coimbatore
- Sri Krishna Group of Institutions, Coimbatore
- Kumaraguru Institute of Technology, Coimbatore
- Hindustan Group of Institution, Coimbatore
- Sankara Group of Institution, Coimbatore
- VLB Group of Institutions, Coimbatore
- Oriental Group of Institutions, Calicut/Wayanad
- Vivekanandha Institutions, Tiruchengode
- Kongu Institutions, Tiruchengode/Namakkal
- VSB Institutions, Aravakkurichi, KARUR

.... and more.....



S Legend Clothing Company

BAZ[®]
ASSOCIATES

We are in the service of providing uniforms.
In uniforms, we confirm to institution's specifications.
However as individuals are unique, we cater to their measurements.



To meet the variegated requirements and demands of our valuable clients, we are instrumental in providing a comprehensive array of School Uniforms. We provide these uniforms for both boys and girls of various schools. These are fabricated using premium quality material sourced from the reliable vendors under the vigilance of talented personnel. Our offered uniforms are checked on different parameters before delivery to make sure they are defect free and of superior quality.

Features:

- * Various sizes available
- * Skin friendly fabric
- * Neatly woven

Enriched with vast industrial experience, we are involved in offering a wide range of Cotton College Uniform. Our uniforms are acclaimed for their designer appearance, fine finish and appealing look. One can avail these in various designs, colors and patterns as per the precise demands. We offer these uniforms at pocket friendly rates.

Features:

- * Quality product
- * High aesthetic appeal
- * Adept stitching





We offer to our coveted customers this high quality range of exclusive Executive Uniforms. We fabricate these uniforms using premium quality fabric as per the latest fashion trends. Apart from this, we also offer printing facility for logo-embroidery, printed or woven labels.

Features:

- * Sophisticated looks
- * Elegant cuts
- * Comfortable fabric

We are one of the leading manufacturers, suppliers and wholesalers of **House Keeping Uniforms**. The offered housekeeping uniforms are specially designed for the housekeeping workforce in hotels, restaurants and offices. Our supplied housekeeping uniforms are made from very soft and skin friendly fabric, to ensure comfort and flexibility to the wearer. The wholesaled housekeeping uniforms are available at very affordable market rates.

Features:

- * Easy to wash and clean
- * Color fastness
- * Stain resistant





Doctors Uniforms offered come in neat stitched as well as quality fabric finish so as to provide for superior dressed look. Further, the soft fabric feel and finish also makes the uniforms comfortable to use options for all day long. Some of its features include providing for enhanced dressing appeal; available in different size options to pick from; elegant design and appealing looks; designs and other construction parameters can also be custom developed as desired by customers.

Our organization is highly instrumental in providing a supreme quality range of **Hospital Nurse Uniform**. These uniforms are manufactured using high grade fabrics and are finely stitched and cut with the help of advance machinery. The offered range is highly appreciated in the market for its excellent finish, optimum quality, non shrinkage, skin-friendliness and color fastness. We offer this range in variety of colors, sizes and specifications at the industry leading prices.

Features:

- * Perfect fit
- * Easy to wash
- * Colorfastness



We feel proud to introduce ourselves as one of the well-known manufacturers, suppliers and wholesalers of S Lengend Clothing Co. The offered industrial coverall is specially designed for the employees of production plants. Our supplied industrial coverall is capable of ensuring comfort and flexibility to the wearer. The wholesaled industrial coverall can be easily worn and taken off.

Features:

- * Easy to clean
- * Comfortable to the wearer
- * Fully covers the body

With the help of our expert team members, we have been able to provide Security Guard Uniform.

Features:

- * Fine finish
- * Beautiful texture
- * Stylish design



Th Advantages at SLCC :

- High quality base fabric
- Best quality and imported inner materials
- Expert tailoring at own integrated unit
- Individual Measurement at your Campus
- Free door delivery at earliest possible
- Individual fit-check at your Campus
- Updated improvements in Patterns & Fittings
- Highly economical Price Package
- High Quality accessories and incorporates
- Customer Care round the year
- Best of extended services and individual care
- Technicians of decades old experience
- Highly skilled and experienced Management
- Dedicated and experienced Sales & Service Team

BAZ[®]
ASSOCIATES

No: 2/504, Ambethkar Nagar Main Road,
Manapakkam, Chennai - 600125.

Tel: 044- 295 000 23

Mob: +91 7200 0653 23

Mail: s.sharfudeen@hotmail.com

s.sharfudeen@bazgroup.in

Web: www.bazgroup.in



S Legend Clothing Company

Manufacturer of Institutional Formal Wear

Personality Development through Power Dressing

No: 50, Gopinath 2nd Main road,
Sri Narayanan nagar, Vettuvankani,
Chennai - 600 115.

Tel : 044 - 2449 1111

E-mail: slegendclothingco@gmail.com

Web: www.slegendclothing.com